

Level 2 GMTA Theory Test

Sample A

Student Name: _____

Date: _____

Teacher Name: _____

Local Association: _____

AURAL

Example:

Are the sounds you hear high or low? Circle the bird in the tree if you hear a high sound.

Circle the fish in the sea if you hear a low sound.



1. Are the sounds you hear high or low? Circle the bird in the tree if you hear a high sound.

Circle the fish in the sea if you hear a low sound.



2. Are the patterns you hear the same or different? Circle the two kittens that look the same if you hear patterns that sound the same. Circle the two kittens that look different if the patterns you hear sound different.



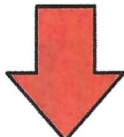
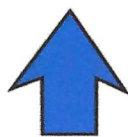
3. Are the notes you hear stepping or skipping? Circle the man stepping if you hear sounds that are stepping.

Circle the man skipping if you hear sounds that are skipping.



4. Are the notes you hear going up, down, or repeating? Circle the arrow pointing up if the notes are going up and getting higher.

Circle the arrow pointing down if the notes are going down and getting lower, and circle the arrow pointing sideways if the notes sound the same.



5. Are the notes you hear going up, down, or repeating? Circle the correct arrow.



Student Name: _____

WRITTEN

Example:

Circle the repeat sign:



6. Circle the symbol that shows the 'G' is located on the second line:



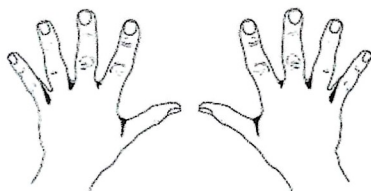
7. Circle the symbol that means to play loudly:



8. Circle the letter that goes in the blank: C D E ___ G

F G C

9. Circle the left hand.



10. The ring is on which finger number? Circle the correct answer.



1 4 5

11. Are the keys with an 'X' a 2nd or a 3rd apart?
Circle your answer.

2nd 3rd



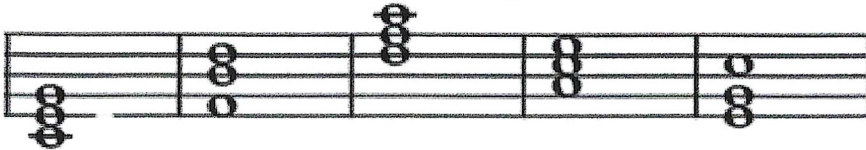
12. How many notes are in a tetrascale? Circle your answer:

6 4 5

13. What is the number of the colored space?
Circle the correct answer.



14. Circle *all* the chords that are in root position.



15. Circle only the fifths in each chord below.

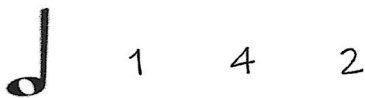


16. Circle the name of the key with a star on it.



E A C

17. How many beats does this note receive? Circle your answer.



On the staff below:

- 18. Draw an 'X' on top of a half note.
- 19. Draw a triangle (\triangle) around a whole note.
- 20. Draw a square (\square) around the time signature.
- 21. Draw a circle (\circ) around a flat sign.
- 22. Draw a checkmark (\checkmark) over the ending barline.

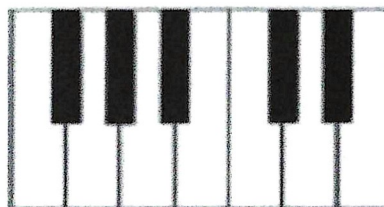


Student Name: _____

23. Circle 2nd or 3rd under each example.

2nd 3rd 2nd 3rd 2nd 3rd 2nd 3rd

24. Put an 'X' on every key that is in the G Pentascale.



25. Put an 'X' on any two keys to make a second (2nd).



26. Circle the correct name of each note under the measure.

F A E F A D B G D F C B